



Thank you for shopping at Car Builders.

Now for the install...

In the table below, you can see where we have allocated individual products in the Wagon Packs. Below the table, we also have some product tips. Another helpful resource is our YouTube video where we install this pack

For further questions or concerns, please contact us on 03 8777 0960

**Please ensure you follow the allocation table for the pack you purchased*

Pack 1 - 4x4 Wagon Premium Floor Pan Pack

	Floor Pan to rear seat	Quarter Panel/Wheel Arches	Doors (incl. rear door/s)	Cargo Area	Roof
Sound Deadener	3 boxes				
Mass Noise Liner	4 Precut Sheets			1 Precut sheet	
Aluminium Tape	This will be used to border Sound Deadener in the quarter panels.				

Pack 2 - 4x4 Wagon Premium Floor Pan and Doors Pack

	Floor Pan to rear seat	Quarter Panel/Wheel Arches	Doors (incl. rear door/s)	Cargo Area	Roof
Sound Deadener	3 boxes		1 box		
Mass Noise Liner	4 Precut Sheets			1 Precut sheet	
Aluminium Tape	This will be used to border Sound Deadener in the quarter panels and doors.				

Pack 3 - 4x4 Wagon Premium Floor Pan, Doors and Roof Pack

	Floor Pan to rear seat	Quarter Panel/Wheel Arches	Doors (incl. rear door/s)	Cargo Area	Roof
Sound Deadener	3 boxes		1 box		1 box
Mass Noise Liner	4 Precut Sheets			1 Precut sheet	
Insul Layer					3 sheets
Aluminium Tape	This will be used to border Sound Deadener in the quarter panels, doors and roof.				

4x4 Wagon Optional Cargo Deadener Upgrade

	Floor Pan to rear seat	Quarter Panel/Wheel Arches	Doors (incl. rear door/s)	Cargo Area	Roof
Sound Deadener				1 Box	

Tips:

Sound Deadener:

Ensure the surface is clean using a white-based spirit. Map out the allocated Sound Deadener to visualise coverage. Lay the sheet on the surface to assess if/how it needs to be cut to fit in planned area. Reveal the backing of the Sound Deadener. Place an end on the surface and slowly lay it down in a rolling motion until the sheet is laying on the surface. Do not pull the deadener over any depression in the surface, rather feed it down into the valley. Use your application roller to apply moderate pressure evenly across the total surface. Use the handle of the roller to apply pressure in valley areas. Sheets can abut or slightly overlap. There may be sections with gaps between sheets. There is no need to apply to mounts, top hats, cross members etc (you are aiming to cover single sheet metal panels). Ensure you leave clearance for bolt down points and areas that require future access.

Water Proof/Insul Layer:

Both of these foams are a peel and stick product. It is important to lay the foam down and carefully template the area it will cover before revealing the backing film. Ensure you have enough material to account for rises and falls in the shape your applying it to. Once you have the template cut out, reveal one end of the product and line it up on the surface. Then slowly reveal the backing while rolling the material onto the surface, **ensuring you aren't stretching the product**, rather try to slightly compress the material. This is particularly important when rolling the material into depressions in the sheet metal. If you stretch the material over and then try to push it into a depression, the material will fight to pop back up. Use the application roller to apply a moderate pressure evenly across the total surface. If you happen to get an air pocket under the material, you can prick through the material to release the air and use the roller to press it down.

Mass Noise Liner

This product is not a peel and stick product. It will sit under its own weight on the floor pan. It is important to lay the product down and carefully template the area it will cover, allowing for rises and falls in the floor pan. We have several tips and trick in templating this product in vehicle installs on our YouTube channel.

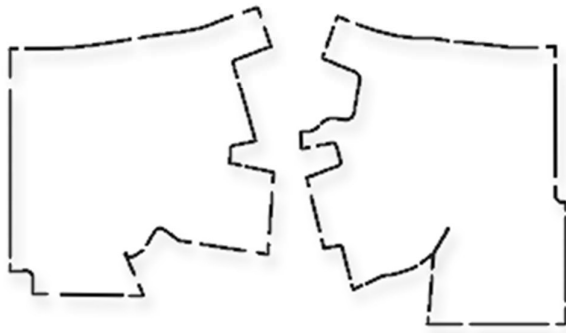
We would love to see your project and photos/video of your pack installed. Tag us in your social media so that we can give you a shout out on our social platforms.



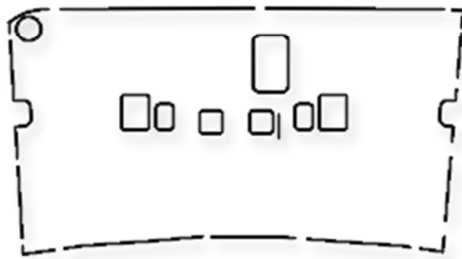


Nissan Patrol GQ

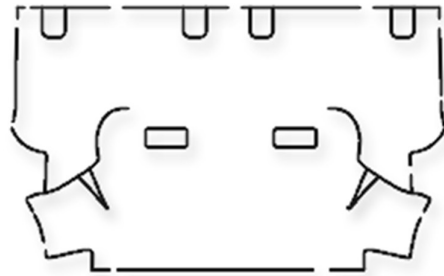
Front of car



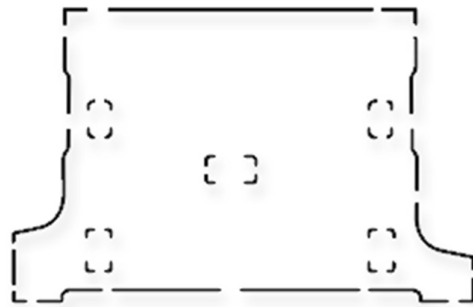
First row



Second row



Third row



Fourth row